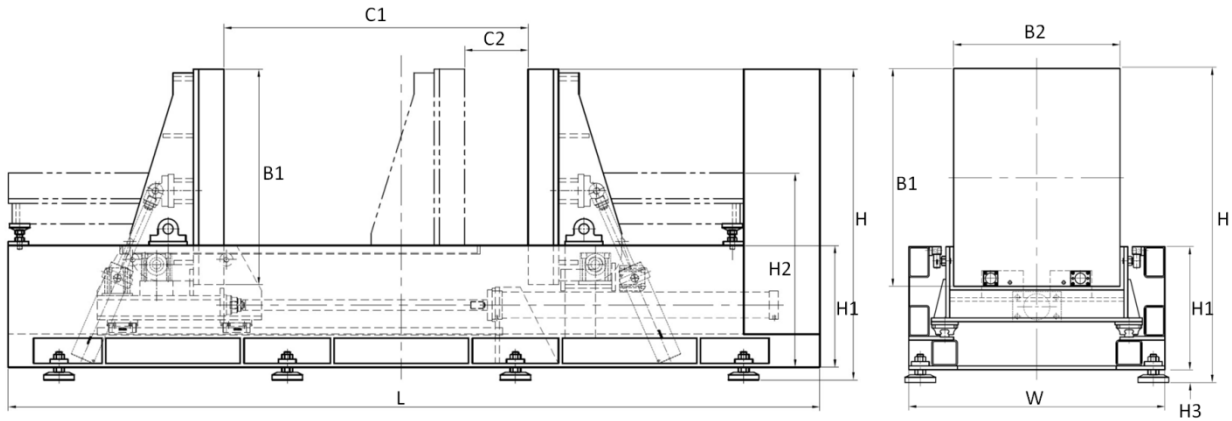




Product Highlights

- Clean design with wired touch screen remote control
- Dedicated for small and medium sized molds maintenance work such as inspection and cleaning
- Tilting and horizontal movement driven by hydraulic pressure
- Dual rotatable magnetic plates with the ability to turn both mold plates simultaneously
- Electro-permanent magnetic clamping technology without the need of clamping bolts
- Permanent magnetic protection to keep molds staying in position despite power outage
- Light weight --- concrete foundation not necessary
- Safe and reliable
- One-man operation

Dimensions



	Dimensions in mm									
	L	W	H	H1	H2	H3	B1	B2	C1	C2
KMF-1.5	3430	1000	1230	480	765	50	850	650	1200	250
KMF-3	4050	1400	1500	600	950	50	1100	1100	1500	300
KMF-5	4700	1650	1750	700	1100	50	1300	1200	1800	400

Specification

	KMF-1.5	KMF-3	KMF-5
Bolster area (mm)	850 x 650	1100 x 1100	1300 x 1200
Turning capacity (t)	1.5	3	5
Maximum plates separation (mm)	1200	1500	1800
Minimum plates separation (mm)	250	300	400
Maximum mold open force (t)	3	8	15
Mold turning speed (mm/s)	20	20	20
Turning angle (°)	0 - 90	0 - 90	0 - 90
Horizontal displacement speed (mm/s)	30	40	40
Permanent electro-magnetic clamping capacity (t)	8	15	25
Motor power (kW)	7.5	11	15
Dimensions (mm)	3430 x 1000 x 1230	4050 x 1400 x 1500	4700 x 1650 x 1750
Weight (t)	2.6	5.5	10

* Above technical parameters are for reference only and are subjected to the actual device.

Dongguan City AQUAmate Machinery Co., Ltd. reserves the rights of final interpretation and revision.

CONTACT

Welteck Machinery Company
Suite 1910-11,19/F., Telford House,
No.16 Wang Hoi Road, Kowloon Bay,
Hong Kong
Tel : (852) 2756 6331
Fax : (852) 2756 5522
Email : info@welteck.com
www.welteck.com

Dongguan City AQUAmate Machinery Co., Ltd.
Shutian Management Zone, Humen,
Dongguan, Guangdong, China
Tel : (86) 769 8570 5316
Fax : (86) 769 8570 5822
Customer Service : (86) 769 8623 9100
http://en.hkbnt.com

Sales Agency in East China
No.388, Jinshan Courtyard,
Jinchang Road,
Yuyao, Zhejiang, China
Tel : (86) 574 6263 8906
Fax : (86) 574 6263 9096

