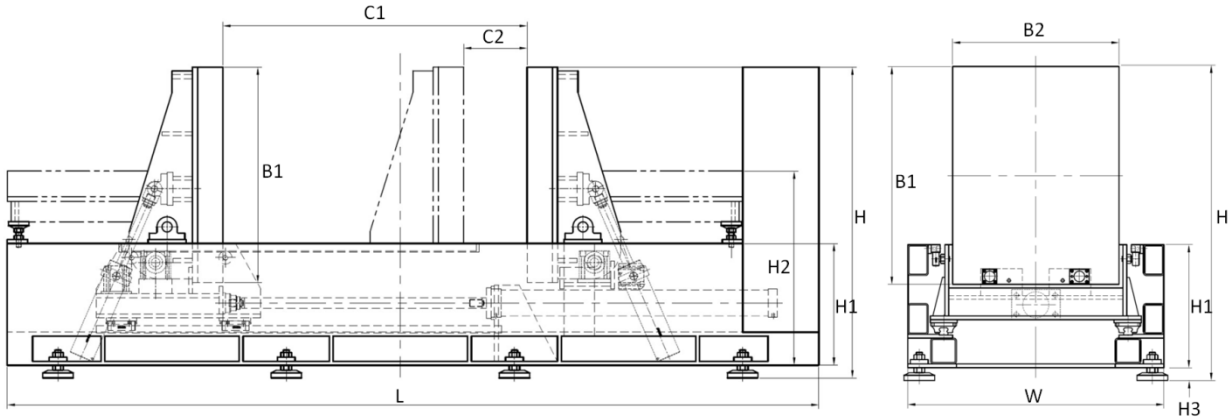




Product Highlights

- Clean design with wired touch screen remote control
- Dedicated for small and medium sized molds maintenance work such as inspection and cleaning
- Tilting and horizontal movement driven by hydraulic pressure
- Dual rotatable magnetic plates with the ability to turn both mold plates simultaneously
- Electro-permanent magnetic clamping technology without the need of clamping bolts
- Permanent magnetic protection to keep molds staying in position despite power outage
- Light weight --- concrete foundation not necessary
- Safe and reliable
- One-man operation

Dimensions



	Dimensions in mm									
	L	W	H	H1	H2	H3	B1	B2	C1	C2
KMF-1.5	3430	1000	1230	480	765	50	850	650	1200	250
KMF-3	4050	1400	1500	600	950	50	1100	1100	1500	300
KMF-5	4700	1650	1750	700	1100	50	1300	1200	1800	400
KMF-10	5800	1800	2150	tbc	tbc	tbc	1500	1300	2000	500
KMF-15	6500	1900	2400	tbc	tbc	tbc	1700	1400	2200	600

Specification

	KMF-1.5	KMF-3	KMF-5	KMF-10	KMF-15
Bolster area (mm)	850 x 650	1100 x 1100	1300 x 1200	1500 x 1300	1700 x 1400
Turning capacity (t)	1.5	3	5	10	15
Maximum plates separation (mm)	1200	1500	1800	2000	2200
Minimum plates separation (mm)	250	300	400	500	600
Maximum mold open force (t)	3	8	15	30	40
Mold turning speed (mm/s)	20	20	20	25	25
Turning angle (°)	0 - 90	0 - 90	0 - 90	0 - 90	0 - 90
Horizontal displacement speed (mm/s)	30	40	40	50	50
Permanent electro-magnetic clamping capacity (t)	8	15	25	70	100
Motor power (kW)	7.5	11	15	18.5	22
Dimensions (mm)	3430 x 1000 x 1230	4050 x 1400 x 1500	4700 x 1650 x 1750	5800 x 1800 x 2150	6500 x 1900 x 2400
Weight (t)	2.6	5.5	10	16	22

* Above technical parameters are for reference only and are subjected to the actual device.

Dongguan City AQUAmate Machinery Co., Ltd. reserves the rights of final interpretation and revision.

CONTACT

Welteck Machinery Company
Unit 2301-02, Prosperity Center,
25 Chong Yip Street, Kwun Tong,
Hong Kong
Tel : (852) 2756 6331
Fax : (852) 2756 5522
Email : info@welteck.com
www.welteck.com

